

# Camden Climate Fund Business Stream Webinar

Wednesday 20<sup>th</sup> August  
Online 12pm - 1pm



**Camden  
Climate  
Fund**

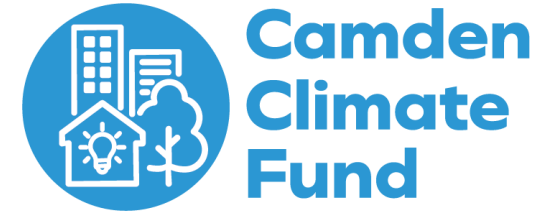
**Camden  
Climate Alliance**



# Agenda

Time	Item	
12.00	<b>Welcome</b>	
12.05	<b>Introduction to the Camden Climate Fund</b>	<b>Maggie Tapa</b> Climate Partnerships Lead
12.10	<b>Business Grant Overview</b> What is the business grant stream & eligibility criteria	
12.15	<b>Application Process</b> Pre-app advice, assessment criteria & what you need to apply	<b>Stephen Walters</b> Sustainability Officer
12.20	<b>Tips for your application</b>	<b>Maggie Tapa</b> Climate Partnerships Lead
12.25	<b>Case study video</b>	
12.30	<b>Q&amp;A</b>	<b>All</b>
12.45	<b>Wrap-up &amp; close</b>	

# What is the Camden Climate Fund?



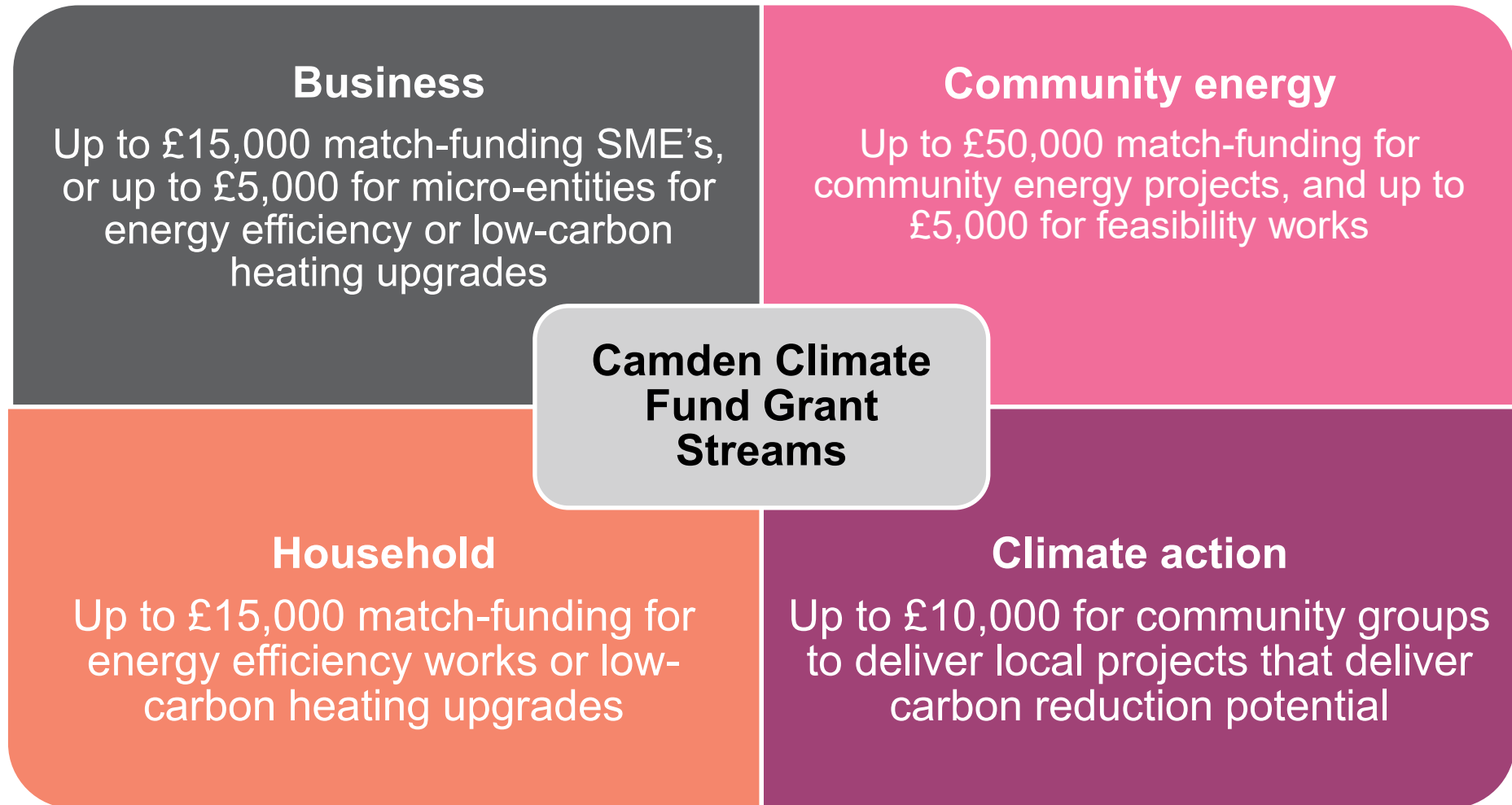
- The Camden Climate Fund (CCF) launched in 2017 provides funding support to residents, business and communities in the borough to deliver projects that reduce emissions in Camden
- The fund is financed by Camden's carbon offset payments, which are collected from developers when they fall short of the Mayor of London's Carbon Reduction target for Major developments in Camden
- The CCF's fourth phase is open and accepting applications until November 2025



**2021 CCF Recipient – Contemporary Dance Trust**  
LED Lighting install

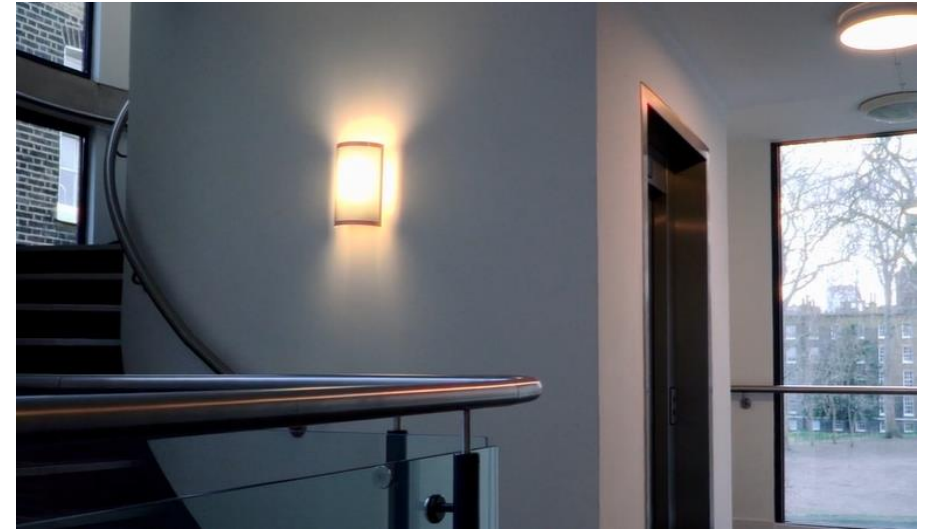


# Camden Climate Fund – Fund Overview



# Business Fund – Overview

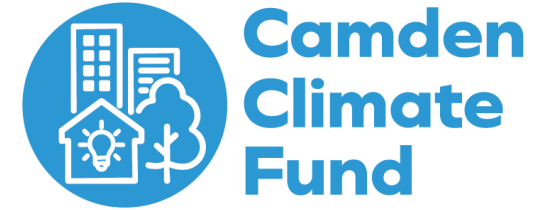
- Grants are available to small to medium businesses to help them install **energy efficiency measures** and **renewable energy technologies**
- **Eligible measures include:**
  - Energy efficiency: LED lighting upgrades, Insulation
  - Renewables: Solar PV, Solar Thermal, low-carbon heating upgrades e.g Air Source Heat Pumps
- As part of Phase 4 of the fund we increased the amount from £10,000 to £15,000 – increasing the support available to businesses recognising the important role businesses have to play and the increasing cost of retrofit



**2025 CCF Recipient – Matrix Chambers**  
LED Lighting install

# Business Fund Eligibility

There are two funding routes available:



## Tier A: Small to Micro-Entities

- Turnover of £10m or less
- Less than 50 employees
- Measures installed at premise located within the borough of Camden
- Member of the [Camden Climate Alliance](#)

**Up to £5,000 - no match-fund required**

## Tier B: Small to Medium businesses

- Turnover of less than £25m
- Less than 250 employees
- Measures installed at premise located within the borough of Camden
- Member of the [Camden Climate Alliance](#)

**Up to £15,000 to cover up to 50% of the costs**

# Business Fund – Eligible Works

The business grants can fund works recommended in either:

- **Energy Performance Certificate (EPC)**
  - Shows energy efficiency of a building on a scale from A (high) to G (low)
  - Includes recommendations to improve building efficiency
- **Energy Audit / Recommendation report**
  - Provides a more detailed assessment of the building
  - Identifies targeted measures for saving energy and reducing emissions



# Energy performance certificate (EPC)

## Certificate contents

- Rules on letting this property
- Energy rating and score
- How this property compares to others
- Breakdown of this property's energy performance
- Recommendation report
- Who to contact about this certificate
- Other certificates for this property

1 Pancras Square  
London  
N1C 4AG

Energy rating

B

Valid until

15 July 2034

Certificate number

8366-7257-7862-1169-7898

Property type

Offices and Workshop Businesses

Total floor area

7,612 square metres

## Share this certificate

Email

## Recommendations

### Changes that may pay for themselves within 3 to 7 years

#### Recommendation

Potential impact  
on carbon  
emissions

Some walls have uninsulated cavities - introduce cavity wall insulation.

Medium

### Changes that may pay for themselves in over 7 years

#### Recommendation

Potential impact  
on carbon  
emissions

Consider installing building mounted wind turbine(s).

Low

### 1.3 Energy Saving Opportunities

Six opportunities have been identified that can be implemented at [REDACTED]

Opportunities 1 to 3 will require a total capital expenditure of approximately £115 and combined, they could reduce the building's energy use by 0.7%, resulting in savings of ~£280 per year and 0.5 tCO<sub>2</sub>e (in 2022).

All opportunities combined will require a total capital expenditure of approximately £365,000 and combined, they could reduce the building's energy use by 41.8%, resulting in an increase in energy costs of ~£320 per year and a reduction of 15.3 tCO<sub>2</sub>e (in 2022).

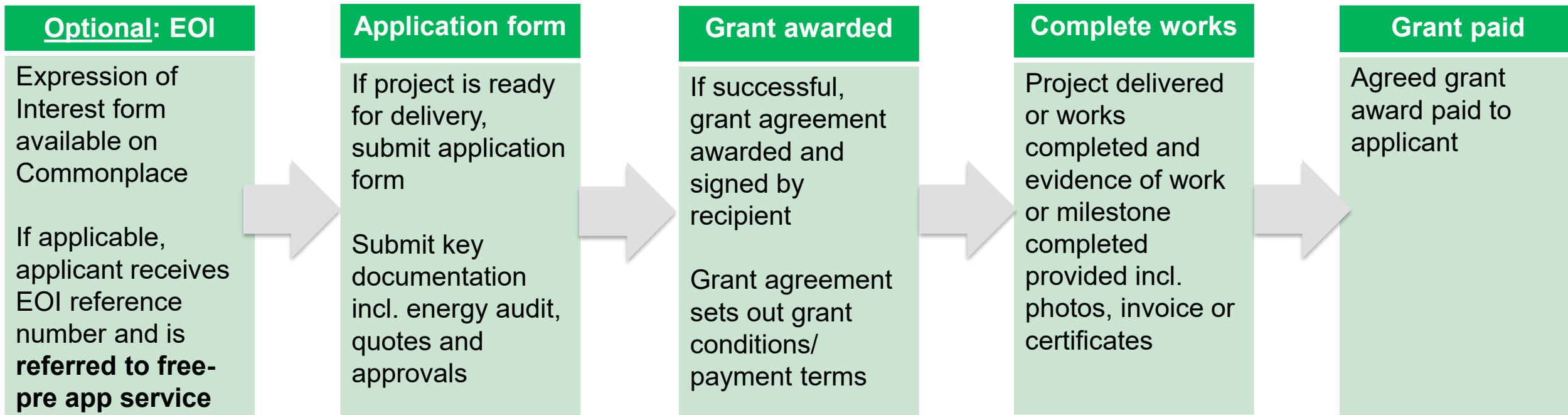
Measure	Estimated savings			% energy savings	Lifetime carbon savings	Cost	Payback period
	Energy saving (kWh/yr)	Cost saving (£/year)	Carbon saving (tCO <sub>2</sub> e) (year 1)	% kWh saving	tCO <sub>2</sub> e (over 15 yrs)	£	Years
1. Ensure server room cooling setpoint is suitable	200	£50	Negligible	0.1%	0.3	-	Instant
2. Utilise timer controls on Ziptap	1,000	£200	0.2	0.5%	1.2	£15	0.1 years
3. Utilise timer controls on drinks fridge (fridge manager)	200	£30	Negligible	0.1%	0.2	£100	3.3 years
4. Install LED lighting with intelligent controls	9,300	£1,900	1.8	4.5%	11.6	£20,000	10.6 years

Measures are sequenced so that each action builds on the previous one



# Business Fund

## Application process



# Free planning advice for Camden Climate Fund projects

- **Plan X** – free online tool available to check if you need planning permission and see what planning considerations apply
- **Free pre-planning application advice service** – if your project does require planning permission, Camden's planning team can advise on whether your project is likely to be approved and suggest changes before you apply



Find out if you need planning permission

### Planning constraints

Planning constraints might limit how you can develop or use the property

These are the planning constraints we think apply to this property

General policy	
Brownfield sites	▼
Article 4 direction areas	▼
Classified roads	▼
Heritage and conservation	
Listed building outlines	▼

# Assessment Criteria

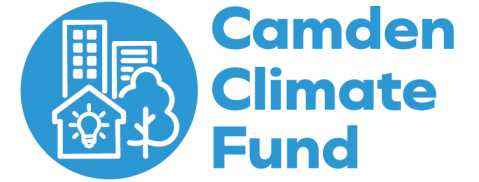
- Projects are assessed on **carbon savings**:  
higher CO<sub>2</sub>e savings → higher chance of approval and funding
- Lower cost per tonne = better value for money
- Effectiveness varies by measure and location – choose actions that deliver the biggest impact



# What you'll need to apply

As part of your application, you must submit the following:

- ☐ **Contact name and phone number**
- ☐ **Company information** – status and annual turnover
- ☐ **Property details** – owned, leased or rented and current energy usage  
*If leased/rented – you must provide written permission from your landlord*
- ☐ **Project details** - the measures you wish to install
- ☐ **Energy audit or EPC**
- ☐ **Quotes** for the works, exclusive of VAT (at least two quotes)
- ☐ **Estimated energy savings** (kWh or CO2e saving – if available in your EPC or energy audit)
- ☐ **You must also be a member of the Camden Climate Alliance**  
(if not already)



**Camden  
Climate Alliance**

All applications should be submitted on Commonplace: <https://camdenclimatefund.commonplace.is/>



# Application Tips – Project Planning & Prioritisation

- ☒ Follow the priority of recommendations in EPC, energy audit or other report
- ☒ Remember there is a limit of **one application every five years**.  
If applying for multiple measures, include them in a single application
- ☒ Let us know if you're using any other public funding as part of your project's match funding
- ☒ Give a brief overview of your organisation's sustainability story: what you aim to achieve with the funding?

# Application Tips – Quotes & Contractors

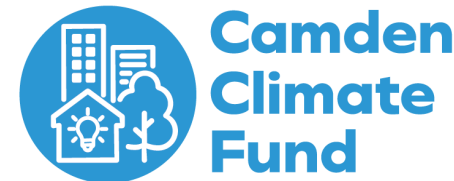
- ✓ Provide at least two itemised quotes for the same measures (but ideally three)
- ✓ Offer a rationale/ justification for your chosen contractor (e.g. lowest cost, or if not, why?)
- ✓ Share any relevant information you shared with the contractor (window / roof space dimensions, images, etc.)
- ✓ Installers for renewable projects must be MSC certified



We want to see projects succeed, feel free to contact us for support at any point via:

[camdenclimatefund@camden.gov.uk](mailto:camdenclimatefund@camden.gov.uk)

# Case-study: Doughty Street Chambers



- Doughty Street Chambers is a barrister chambers based in Camden
- In 2024, they received £10,000 in funding to support the installation of Solar PV buildings, saving an estimated 4,219kg of CO2e annually
- Watch the video to learn more:  
<https://www.youtube.com/watch?v=MdsaCl4Kkxk>



We installed 100 solar panels across four listed buildings in this conservation area.



# Application deadlines

- Applications are being accepted and awarded until **1 November 2025**
- You should receive a decision on your application **within two weeks**
- Applications will re-open again in early 2026

More information can be found on:  
<https://camdenclimatefund.commonplace.is/>



**2025 CCF Recipient – WAC Arts**  
Solar PV

# Useful Links

## MCS Database

MCS sets and maintains standards for low carbon technologies

Use this database if you need to find a Solar PV or Heat pump installer

<https://mcscertified.com/find-an-installer/>



## Trustmark

Government endorsed database to help you find accredited energy assessors or contractors

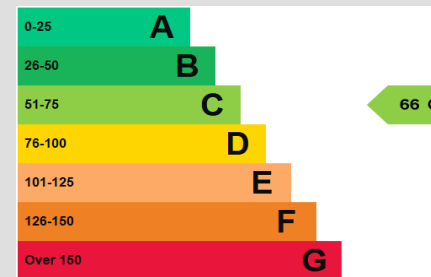
<https://www.trustmark.org.uk/>



## EPC Register

All certificates are publicly available on the GOV.UK website:

<https://www.gov.uk/find-energy-certificate>



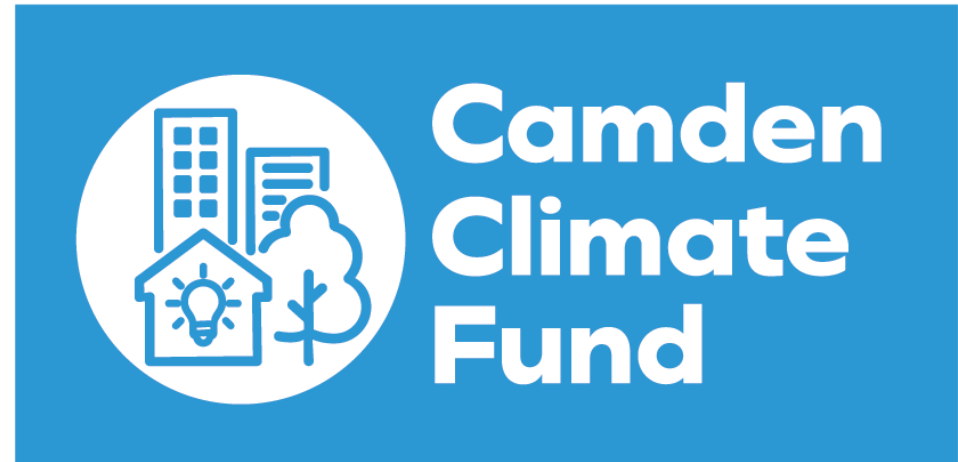
## Camden Climate Alliance

Sustainability network for businesses based in Camden – access to trainings, events, sustainability certifications and more:

[Join the alliance - Camden Climate Alliance](#)

## Camden Climate Alliance

# Question & Answer Session



# Thank you!

- Email any questions to [camdenclimatefund@camden.gov.uk](mailto:camdenclimatefund@camden.gov.uk)
- Access tools, guidance and recordings of past trainings on the Camden Climate Alliance website:  
<https://www.camdenclimatealliance.org.uk/>



**Camden  
Climate  
Fund**

**Camden  
Climate Alliance**